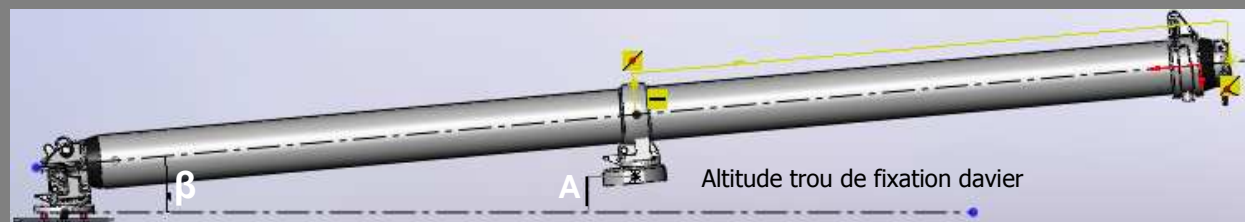
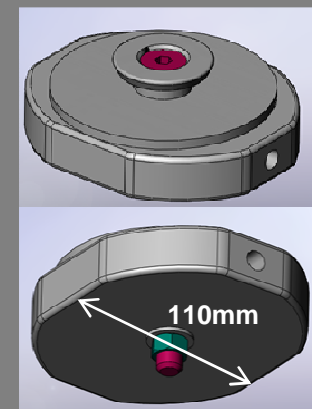


8. Options et accessoires

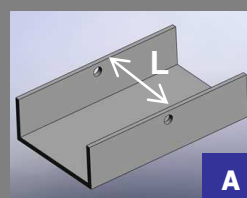
Option adaptation davier



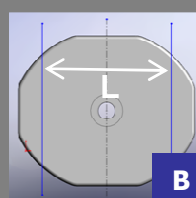
	BDH 70	BDH 80	BDH 90	BDH 100
Longueur utile	800mm	900mm	950mm	1000mm
β = Angle maxi	5°	5°	3.15°	3.15°
A = Altitude trou de fixation davier	38,5mm	53,5mm	28mm	31mm



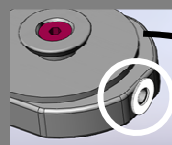
Semelle
davier
livrée
pré-
montée



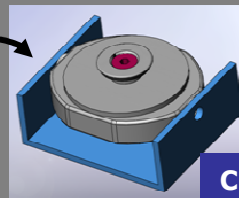
Mesurer



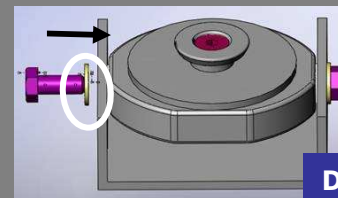
Couper



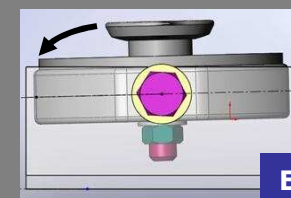
Positionner



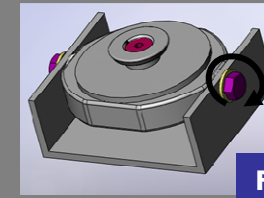
Visser



Incliner



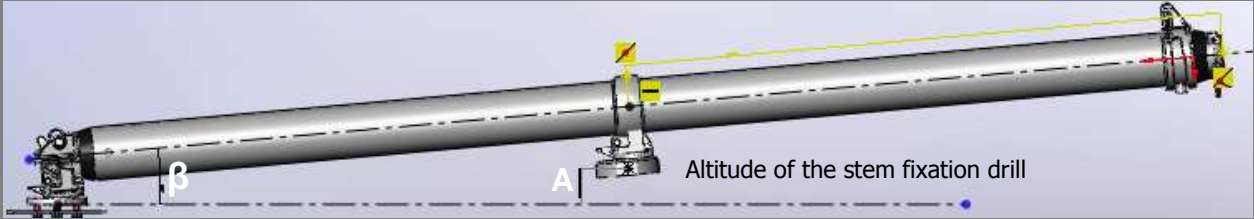
Sécuriser



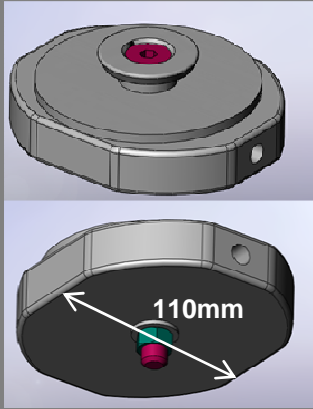
NB : Possibilité de mettre une cale sous le champignon travail arrière pour que la position du trou de fixation davier soit plus haute.

8. Options et accessories

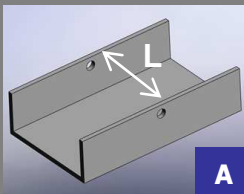
Stem adaptation option



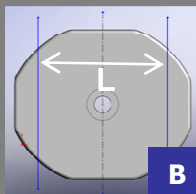
	BDH 70	BDH 80	BDH 90	BDH 100
Outside length	800mm	900mm	950mm	1000mm
β = maximum angle	5°	5°	3.15°	3.15°
A = Altitude of the stem fixation drill	38,5mm	53,5mm	28mm	31mm



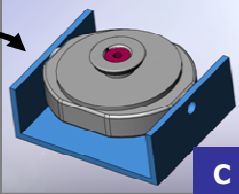
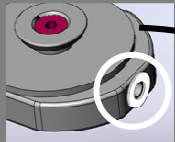
Stem plate delivered pre-fitted



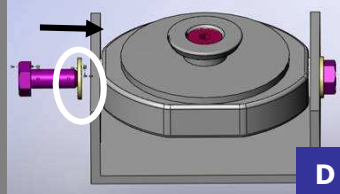
Measure



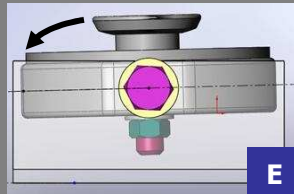
Cut



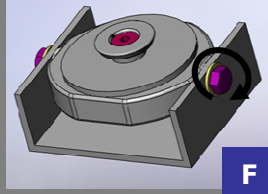
Position



Screw



Lean



Secure

Nota: It is possible to fit extra plate underneath the back working plate in order to make it higher.